



Hydenmet Solutions

EARTH NETWORKS

In partnership with Earth Networks (EN)



Presents **CLASS**  
For K-12 Schools across India

**CLASS** expanding to Climate Learning and Student Safety is an Environmental STEM program for Schools that combines technology with learning. Components of the CLASS Program are:

- An automated weather station installed in your school that captures weather data every minute
- SFERIC Maps – A Weather Visualization and alerting tool from Earth Networks
- Climate Teaching / Learning resources from GLOBE, an initiative of NASA



The Automatic Weather Station installed in the school, increases the hyperlocal accuracy of the weather forecasts given to the school. It measures over 32 weather parameters every minute, covering the following and more:

- Temperature, heat index and wind chill
- Humidity, wet-bulb temperature, Dew Point
- Wind speed, wind direction, Wind gust
- Rainfall, cloud cover, Precipitation
- Pressure, Radiation

Upon installation of the weather station, the school will be provided with a weblink for viewing current weather observations as well as forecast of various weather parameters called OWC expanding to Online Weather Centre. The forecasts are for the specific location of the school and hence very accurate. See below an OWC example

**Baltimore Country Club**  
Lutherville, MD

61.4°  
Switch to Metric

WIND: 3 mph

Latitude: 39.4411  
Longitude: -76.6644  
Elevation: 496 ft

TEMPERATURE	WIND	PRECIPITATION
Hi/Low: 61°/57°	Current: NW 3.0 mph	Today: --
Wind Chill: 61.0°	Gust: NW 3.0 mph	Rate: --
Dew Point: 54.0°	Avg: NW 2.0 mph	
HUMIDITY	PRESSURE	ALMANAC
Current: 79.0%	Current: 30.06 "	Sunrise: 6:44 AM
Hi: 91.0%	Hi: 30.13 "	Sunset: 7:20 PM
Low: 77.0%	Low: 30.05 "	Moonphase: 63%

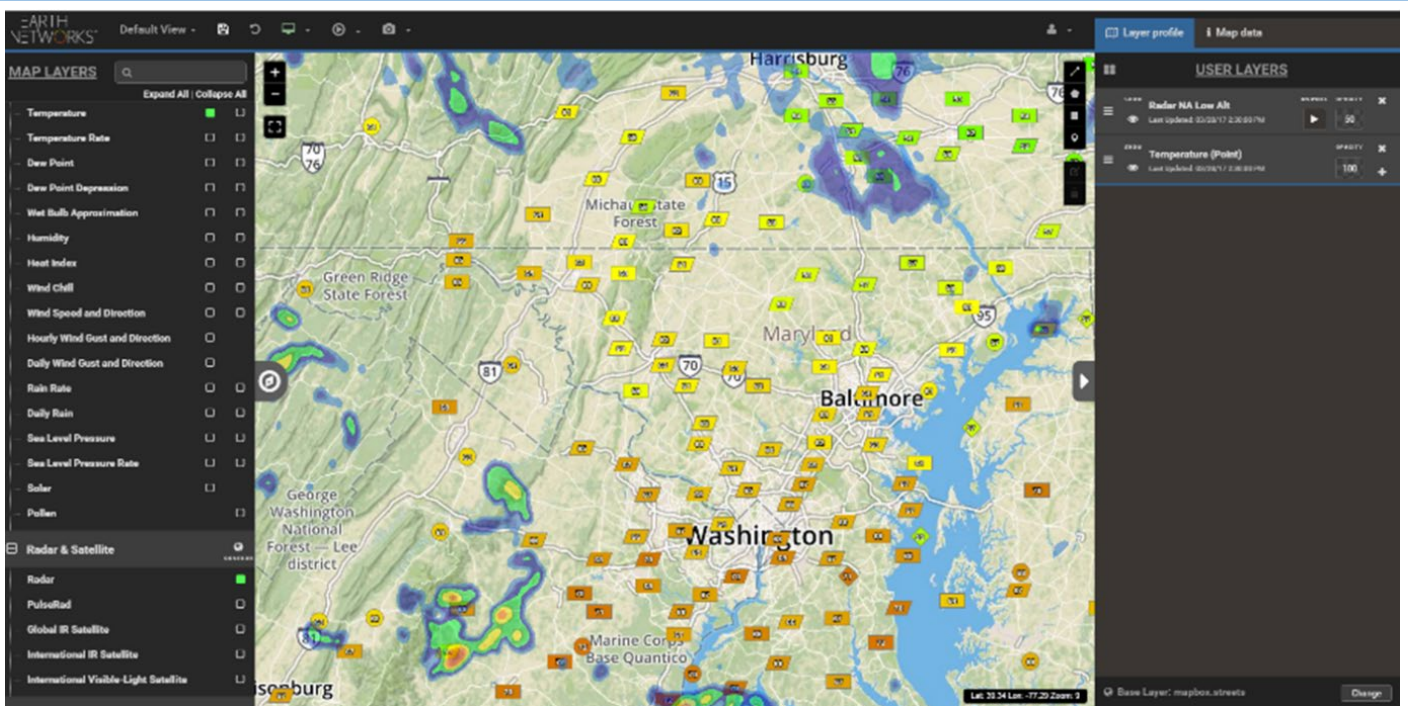
Daily Obs Monthly Obs Station Graph

Baltimore Country Club Lutherville-Timonium, MD

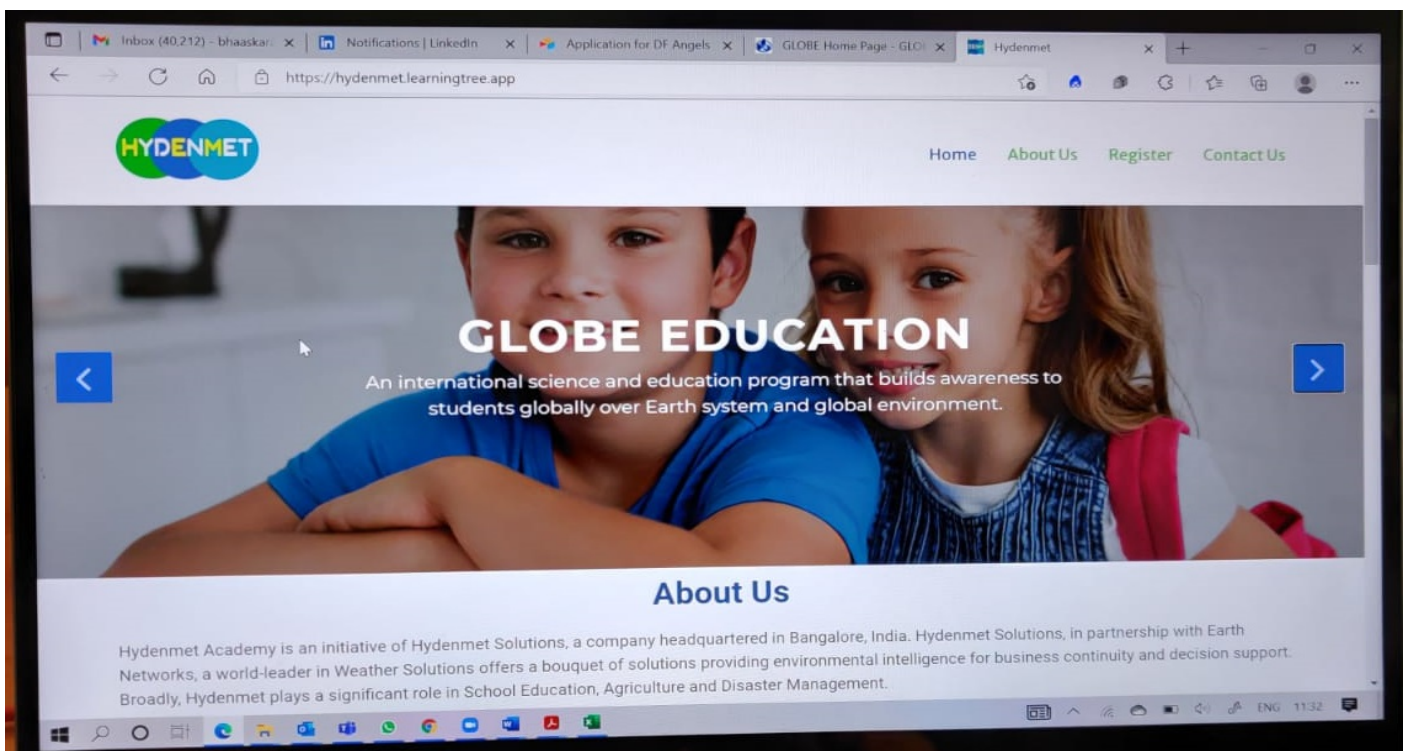
9:18 AM Daylight

10-Day Forecast Hourly Forecast

TUES	WED	THUR	FRI	SAT	SUN	MON	TUES	WED	THUR
73° Mostly Cloudy	76° 60% Chance of Storms	74° 60% Chance of Storms	77° 40% Chance Rain Showers	78° 30% Chance Rain Showers	79° Mostly Sunny	78° Mostly Sunny	74° Partly Cloudy	73° Partly Cloudy	74° Partly Cloudy
TUES NIGHT	WED NIGHT	THUR NIGHT	FRI NIGHT	SAT NIGHT	SUN NIGHT	MON NIGHT	TUES NIGHT	WED NIGHT	THUR NIGHT
62° 60% Chance Rain Showers	63° 30% Chance Rain Showers	63° 40% Chance Rain Showers	64° Mostly Cloudy	63° Partly Cloudy	64° Partly Cloudy	62° Partly Cloudy	57° Partly Cloudy	57° Partly Cloudy	57° Partly Cloudy



**SFERIC Maps** (see picture above) provides an interactive weather visualization platform for students. SFERIC Maps also acts as a severe weather alerting platform for schools to help them manage outdoor events taking into consideration upcoming severe weather conditions, including lightning & dangerous thunderstorms, heavy rainfall, heat index, wind chill and humidity, among others.



GLOBE, expanding to Global Learning and Observations to Benefit the Environment is an initiative of NASA providing rich environmental learning content covering Atmosphere, Hydrosphere, Biosphere and Pedosphere – provides preparatory modules for Science & Geography Teachers, which we are offering through [www.hydenmet.academy](http://www.hydenmet.academy). It also provides presentations, classroom activities and experiments for students, which we have mapped to specific science & geography topics in NCERT for easy use.



For inquiries and questions, please contact us!  
 WhatsApp +91-98450-67077  
 Send a mail to [class@hydenmet.in](mailto:class@hydenmet.in)  
[www.hydenmet.in](http://www.hydenmet.in)

